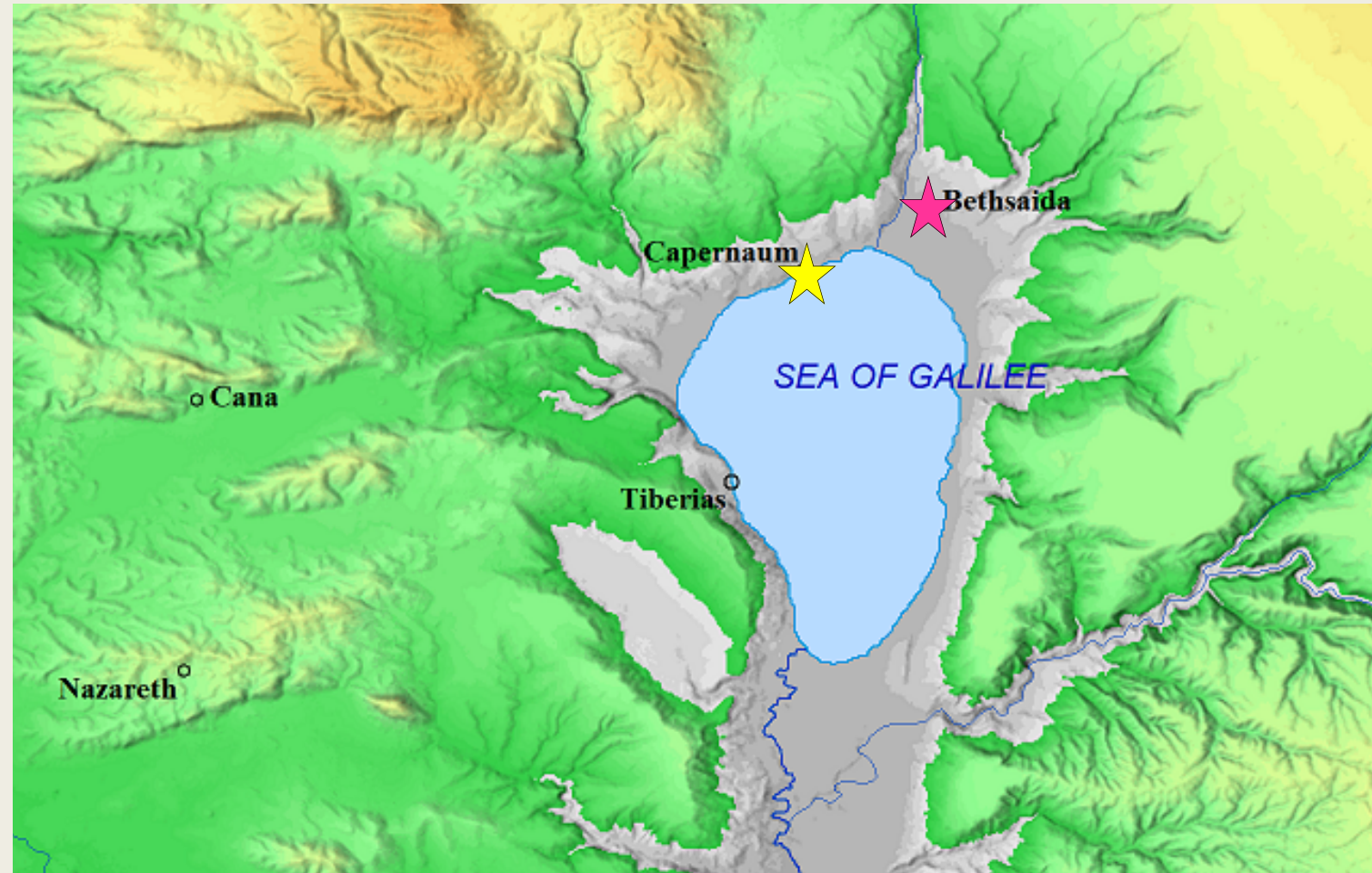


★ **Bethsaida** – site of the feeding of the 5000

★ **Capernaum** – where disciples were headed when Jesus walked on water



Three Questions

- **When did You get here?**

- You are looking for Me for wrong reasons; work for spiritual food

- **What must we do to do the works God requires?**

- Work of God is to believe in Me

- **What sign then will You give the we may see it and believe You?**

- Just like God gave your ancestors bread from heaven, so He continues to provide Bread from heaven to you today

Verse	Jesus	Faith	Salvation
29	One He (Father) has sent	Believe	
33	Bread of God		
35	The Bread of Life	Comes to Jesus/believes in Jesus	Never be hungry/thirsty
39			Raised up at the last day
40	Son	Looks to Son and believes in Him	Eternal life
47		Believes	Eternal life
48	Bread of Life		
50	Bread from heaven	Eat	Not die
51	Living bread	Eats this bread	Live forever
53-54	Son of Man	Eat His flesh/drink His blood	Eternal life/raised up on last day
56		Eats My flesh/drinks My blood	Remains in Me/I in them
57		Feeds on Me	Live
58	Bread	Feeds	Live forever

Process of Salvation



Prevenient Grace

- Grace that goes before/precedes faith
- No one can come to Me unless the Father draws them
- Holy Spirit 'working on' us from 'the outside'
- Heb 4.7: don't harden your heart

Faith

- Faith = trust
- Work of God is this: to believe in the One He has sent
- 'To believe' is not intellectual but relational
- 'To believe' is not a one time event but an ongoing reality

Preserving Grace

- Grace that keeps us in relationship with God
- I will never drive them away/I shall lose none of all those He has given me
- Rom 8.38-39: nothing can separate us from love of God
- 2 for marriage/1 for divorce

The Priority of the Eternal

Psalm 103.15-16: The life of mortals is like grass, they flourish like a flower of the field; the wind blows over it and it is gone, and its place remembers it no more.

More important to be in good standing with Jesus and His Kingdom than with the world and its kingdom.

